



Newsletter

A Word from the Director

Dear Parents,

February is the month of love. Loving and caring for your children while they are at preschool is an easy and relished task. The children come to school with so much love in their hearts. At this age, they probably don't know anything but love-love from their parents and siblings, grandparents, and extended families.

I mentioned last month the professionalism of our staff. We also enjoy the support of a wonderful school board and church staff. Everyone is focused on helping to keep your children safe and happy in a Christian environment. The love and concern extends from Mr. Abe, our custodian, to John Wall, the pastor of Skidaway Island Presbyterian Church. Our Board members meet monthly to plan a well-organized and efficient preschool. Four of our members are former teachers and offer many helpful suggestions for a well-functioning school. The Board members are:



- Debbie Hornsby, President
- Vivian Sullivan
- Cathy McKeever, Secretary
- Shelley Barquist
- Christy Moore, Parent
- Zach Sasser, Assistant Pastor

- Angela Mandel, Parent
- Lenore Livingston, Parent
- Stephanie Tallevast
- Jane Garrison
- Carolyn Wall

Inside this issue:

A Word from the Director	1
Summer Camp on the Island	1
Valentine's Day	2
Dates to Remember	2
Vacation Bible School	2
Sick children	2

Summer Camp on the Island

Registration for Summer Camp will be the beginning of March. There will be classes for 2,3,4, and 5 year olds. A teacher and assistant from our current staff will be teaching the classes



June 1-5, 9-12, Monday—Friday
June 8-12, 9-12, Monday—Friday
Tuition is \$125 per week.
Sign up for 1 or 2 weeks

Deposit of \$50 must accompany application (to be applied to tuition)

Special points of interest:

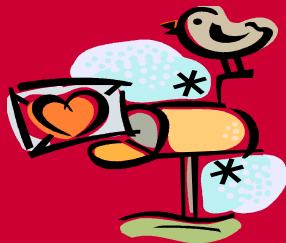
Supply fees are due on March 1 for the 2009-2010 school year.

1 year olds—\$125
 2-3 year olds—\$150
 Pre K—\$200

Valentine's Day

Sick children... sick or stay home? Guidelines for Parents

Please have your child bring one unaddressed valentine for each child in the classroom. Each child will receive a valentine from the other children in the class. The party will begin at 11:30 on Friday, February 13.



Skidaway Island Presbyterian Church
Vacation Bible School
June 15-19, 9-12 a.m.

Go to school—If your child has any of the following symptoms, they should probably go to school

- Sniffles, a mild runny nose with minimal drainage, mild cough without a fever
- Vague complaints of aches, pains, or fatigue

Stay at home—if your child has any of the following symptoms, please keep the child home.

Chicken pox—Keep children home until no longer contagious

Colds—runny nose and fever, bad cough, headache or nausea; or if the child is too tired or too uncomfortable to function at school

Diarrhea—Keep children home for 24 hours.

Ears—Drainage from the ear and/or ear pain should be evaluated by your health care provider.

Eyes—Thick mucus, pus, or clear liquid draining from eye may be contagious. Return to school when the drainage and symptoms have cleared.

Fever—A child must be fever free for 24 hours before returning to school

Nasal Discharge and/or chronic cough—These conditions may be contagious and may require treatment. Your child should be seen by you health care provider.

Sore throat—A sore throat especially with fever or swollen neck glands may be contagious

Vomiting—an ill child who is vomiting should remain home for 12-24 hours after the episode and until the child has tolerated at least two normal meals



Dates to Remember

Singing with Matt
Walk to The Marshes to give Valentines to
the residents and sing songs
Valentine parties*
Presidents' Day—no school
Supply Fees due for 2009-2010

Spring break
*parents invited

Friday, February 6

Friday, February 13, 10:00*

Monday, Feb. 13, 11:30*

Monday, February 16

March 2

April 6-13

